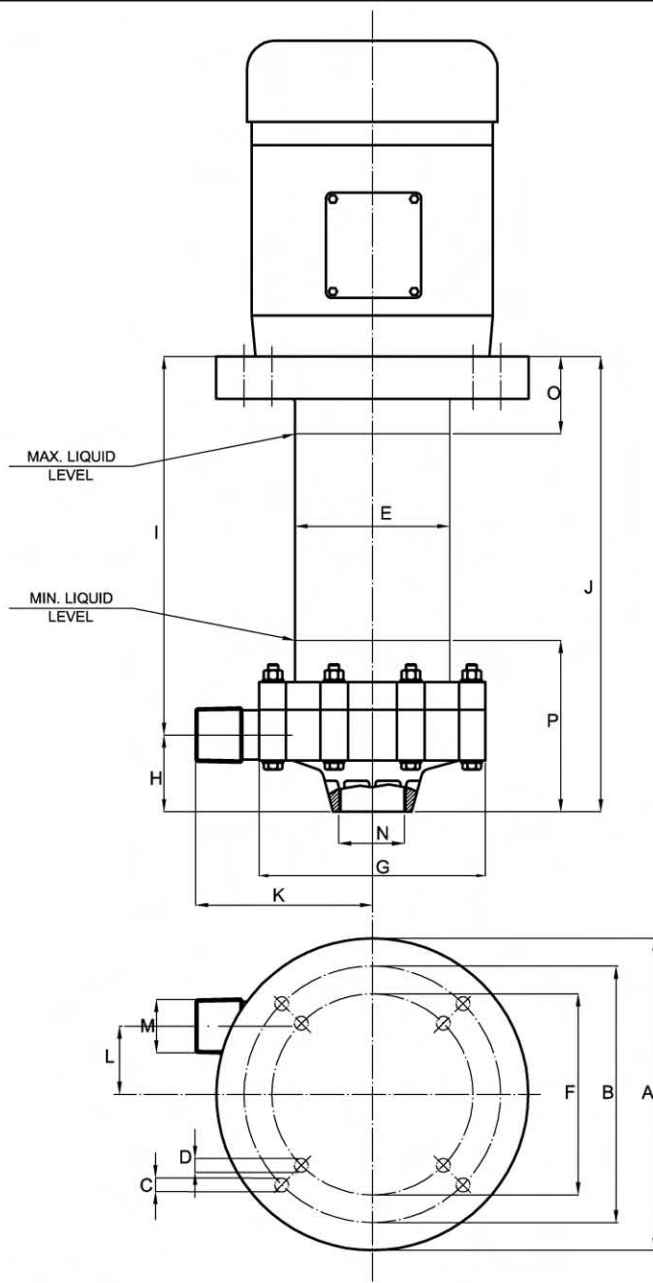


dimensions in inches



NOTE:  
DIRECTION OF ROTATION IS CLOCKWISE  
AS SEEN WHEN FACING THE PUMP CASING.  
PUMPS AVAILABLE THREADED OR FLANGED.

THE DIMENSION'S ARE PURE INDICATIVE AND CAN BE  
CHANGED WITHOUT PRIOR NOTICE.

PUMP TYPE	MOTOR FLANGE	HP	DIMENSIONS - Inches -														
			A	B	C	D	E	F	G	H	I	J	L	M (NPT)	N (NPT)	O	P
<b>MV 6.0</b>	56C	0.5	8-5/8	7-7/16	3/8	7/16	4-3/8	5-7/8	5-5/8	2-3/8	10-1/8	12-3/8	1-3/4	3/4" MALE	1" FEMALE	2-5/8	5

DIMENSIONS WITHOUT TOLERANCE		NOT QUOTED RADIUS BEVEL EDGE		SCALE	MATERIAL SPECIFICATIONS			
ACCURACY DEGREE	Js13	R=			DESIGNATION	EXTRACTED FROM	TERMIC AND/OR SURFACE TREATMENT	
UNI-ISO STANDARD	2768	sm=						
SUBSTITUTE OF				DATE	SIGNATURE			
SUBSTITUTED BY				DATE	SIGNATURE	N.PATTERN	RAW WEIGHT	
DRAWN BY	CHECKED BY	APPROVED BY	DWG. TYPE	SIZE	N.MASK	MACHINED WEIGHT		
NAME					MACHINE <b>PROMAG MV 6.0 PP/PVDF</b>			
DATA DATE	05/09/12	05/09/12						

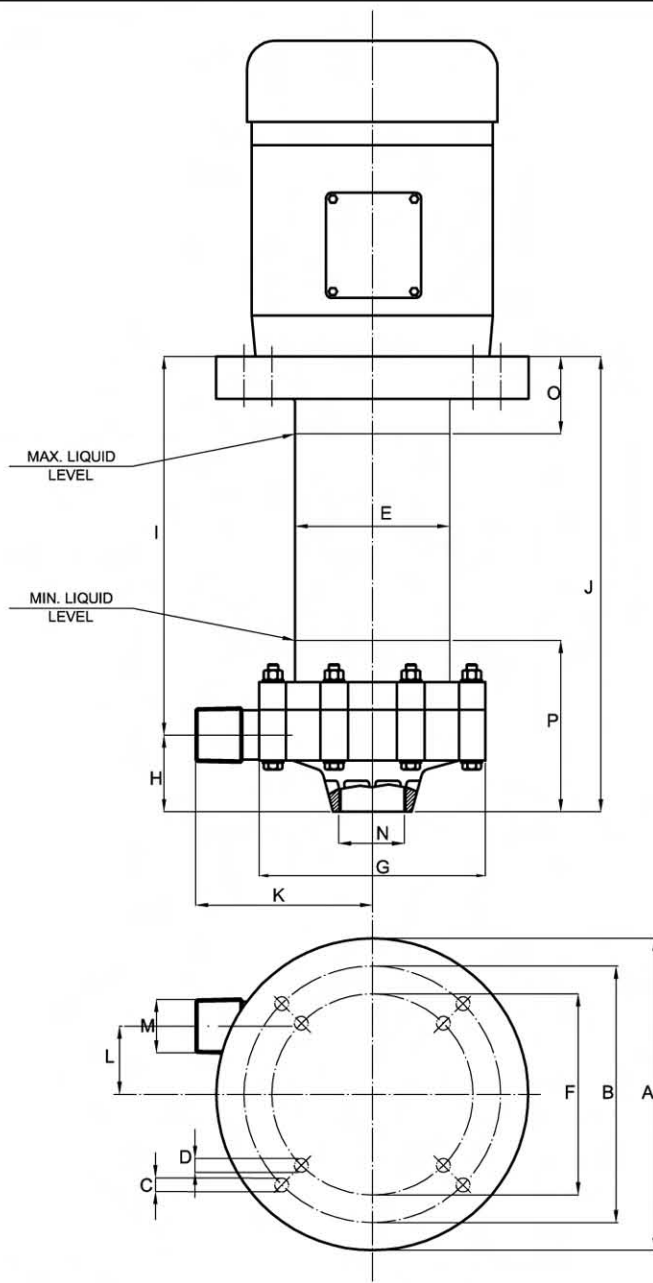


**WARRENDER, LTD.**  
Seal-less Mag Drive Pumps  
From Stock or Built-to-Spec™

SUBJECT **DIMENSIONAL DRAWING**

DWG N. \_\_\_\_\_ REV. **A**

dimensions in inches



NOTE:  
DIRECTION OF ROTATION IS CLOCKWISE  
AS SEEN WHEN FACING THE PUMP CASING.  
PUMPS AVAILABLE THREADED OR FLANGED.

THE DIMENSION'S ARE PURE INDICATIVE AND CAN BE  
CHANGED WITHOUT PRIOR NOTICE.

PUMP TYPE	MOTOR FLANGE	HP	DIMENSIONS - Inches -														
			A	B	C	D	E	F	G	H	I	J	L	M (NPT)	N (NPT)	O	P
<b>MV 7.0</b>	56C	1	8-5/8	7-7/16	3/8	7/16	4-3/8	5-7/8	5-5/8	2-3/4	10-1/8	13	1-3/4	1" MALE	1 1/2" FEMALE	2-5/8	5

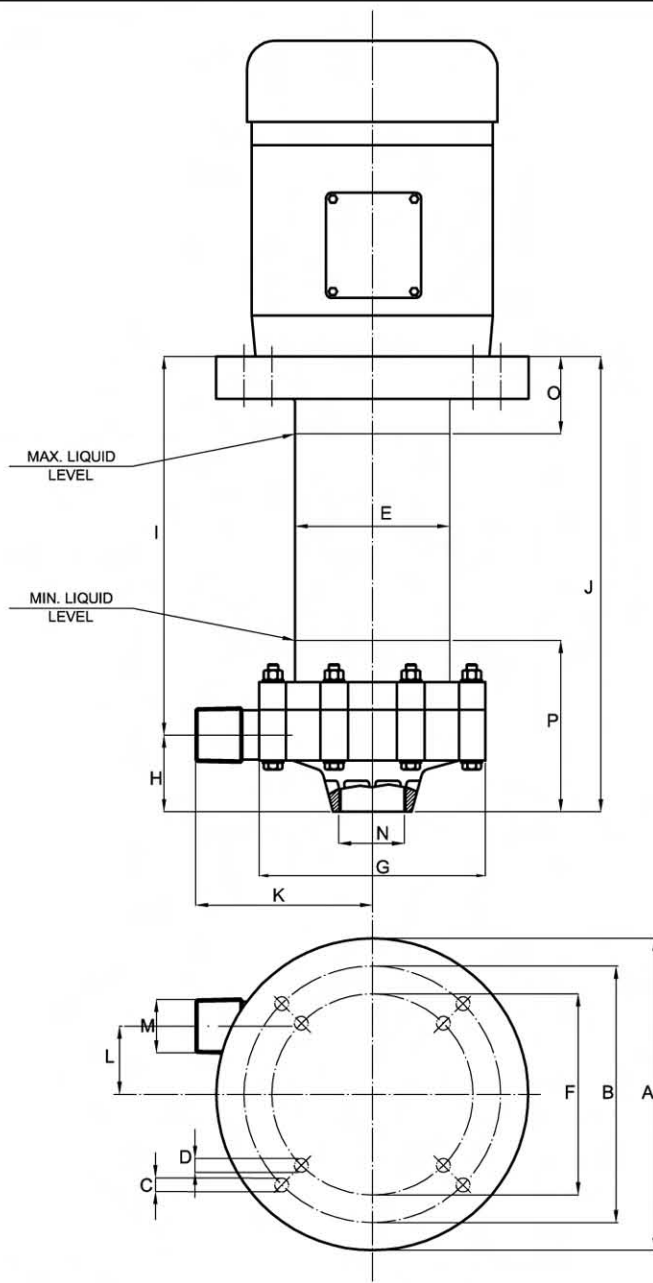
DIMENSIONS WITHOUT TOLERANCE		NOT QUOTED RADIUS BEVEL EDGE		SCALE	MATERIAL SPECIFICATIONS		
ACCURACY DEGREE	Js13	R=			DESIGNATION	EXTRACTED FROM	TERMIC AND/OR SURFACE TREATMENT
UNI-ISO STANDARD	2768	sm=					
SUBSTITUTE OF				DATE	SIGNATURE		
SUBSTITUTED BY				DATE	SIGNATURE	N.PATTERN	RAW WEIGHT
DRAWN BY	CHECKED BY	APPROVED BY	DWG. TYPE	SIZE	N.MASK	MACHINED WEIGHT	
NAME					MACHINE <b>PROMAG MV 7.0 PP/PVDF</b>		
DATA DATE	05/09/12	05/09/12					



**WARRENDER, LTD.**  
Seal-less Mag Drive Pumps  
From Stock or Built-to-Spec™

SUBJECT		<b>DIMENSIONAL DRAWING</b>	
DWG N.		REV.	<b>A</b>

dimensions in inches



NOTE:  
DIRECTION OF ROTATION IS CLOCKWISE  
AS SEEN WHEN FACING THE PUMP CASING.  
PUMPS AVAILABLE THREADED OR FLANGED.

THE DIMENSION'S ARE PURE INDICATIVE AND CAN BE  
CHANGED WITHOUT PRIOR NOTICE.

PUMP TYPE	MOTOR FLANGE	HP	DIMENSIONS - Inches -														
			A	B	C	D	E	F	G	H	I	J	L	M (NPT)	N (NPT)	O	P
<b>MV 7.5</b>	56C	1.5	11	7-7/16	3/8	7/16	5-1/2	5-7/8	7-7/8	3-1/8	10-7/16	13-5/8	2-5/8	1 1/4" MALE	2" FEMALE	2-5/8	8

DIMENSIONS WITHOUT TOLERANCE		NOT QUOTED RADIUS BEVEL EDGE		SCALE	MATERIAL SPECIFICATIONS		
ACCURACY DEGREE	Js13	R=			DESIGNATION	EXTRACTED FROM	TERMIC AND/OR SURFACE TREATMENT
UNI-ISO STANDARD	2768	sm=					
SUBSTITUTE OF				DATE	SIGNATURE		
SUBSTITUTED BY				DATE	SIGNATURE	N.PATTERN	RAW WEIGHT
DRAWN BY	CHECKED BY	APPROVED BY	DWG. TYPE	SIZE	N.MASK	MACHINED WEIGHT	
NAME					MACHINE <b>PROMAG MV 7.5 PP/PVDF</b>		
DATA DATE	05/09/12	05/09/12					



**WARRENDER, LTD.**  
Seal-less Mag Drive Pumps  
From Stock or Built-to-Spec™

SUBJECT **DIMENSIONAL DRAWING**

DWG N. \_\_\_\_\_ REV. **A**